



Feature -
 good actuation feeling
 bi-color LED illuminated available
 long life cycles
 SPDT or DPDT, lock / non-lock function

Application -
 instrumentation
 communication equipments

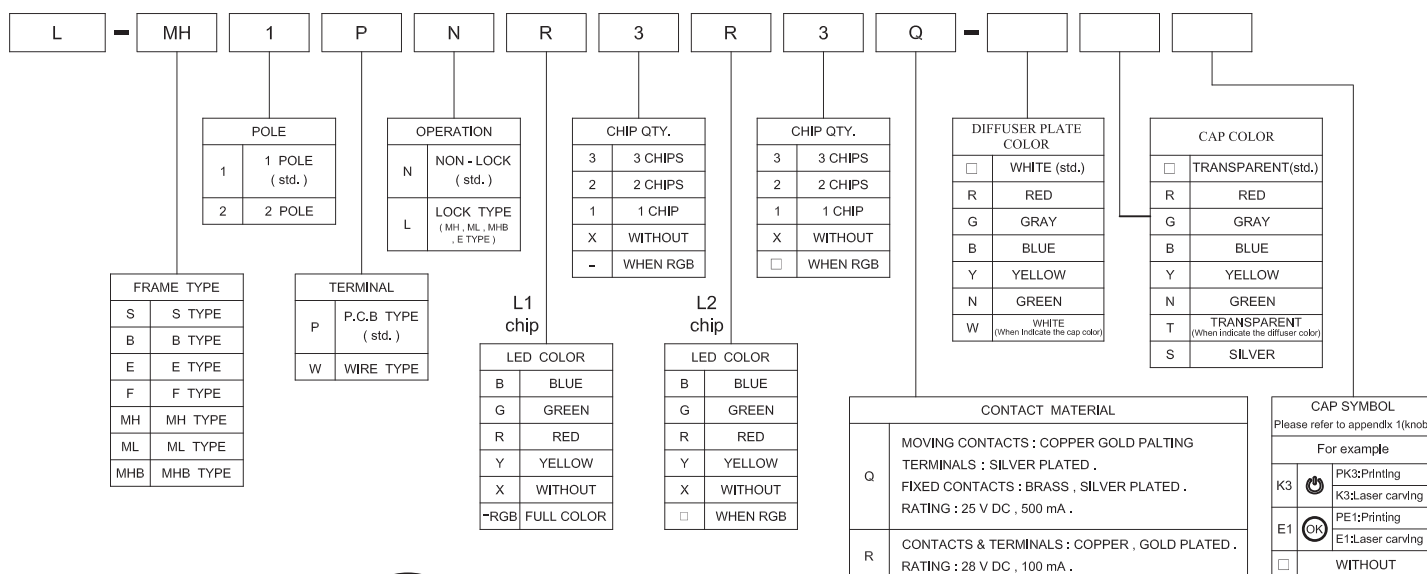
► SPECIFICATIONS

| SWITCH SPECIFICATIONS | |
|-----------------------------|--|
| POLE - POSITION | ON - < ON > for Momentary Type , ON - ON for Self - Lock Type SPDT , DPDT |
| CONTACT RATING | SEE CONTACT MATERIAL |
| CONTACT RESISTANCE | 50 mΩ MAX. (SILVER CONTACT) ; 100 mΩ MAX. (GOLD PLATING CONTACT) , 1.5 V DC ; 100 mA , by Method of Voltage DROP |
| INSULATION RESISTANCE | 100 MΩ MIN. 500 V DC |
| DIELECTRIC STRENGTH | Breakdown is not Allowable ; 1000 V AC for 1 Minute |
| OPERATING FORCE | 200 ± 100 gf (SPDT) 300 ± 150 gf (DPDT) |
| OPERATING LIFE | 200,000 cycles (SILVER CONTACT) 200,000 cycles (GOLD PLATING CONTACT) |
| OPERATING TEMPERATURE RANGE | -20°C ~ 70°C |
| TOTAL TRAVEL | 2.2 ± 0.2 mm |

| LED SPECIFICATIONS | | | | | | |
|-------------------------|------|-------------------|---------|---------|---------|---------|
| | Unit | Value / LED Color | | | | |
| | | Red | Yellow | Green | Blue | |
| FORWARD CURRENT | If | mA | 20 | 20 | 20 | 20 |
| REVERSE VOLTAGE | Vr | V | 5.0 | 5.0 | 5.0 | 5.0 |
| REVERSE CURRENT | Ir | μA | 10 | 10 | 10 | 10 |
| FORWARD VOLTAGE@20mA | Vf | V | 1.7-2.2 | 1.7-2.2 | 1.8-2.4 | 2.7-3.7 |
| LUMINOUS INTENSITY@20mA | Iv | mcd | 230 | 230 | 410 | 585 |

■ Physical and electrical information of LED will be provided upon customer's request on switches .

► HOW TO ORDER

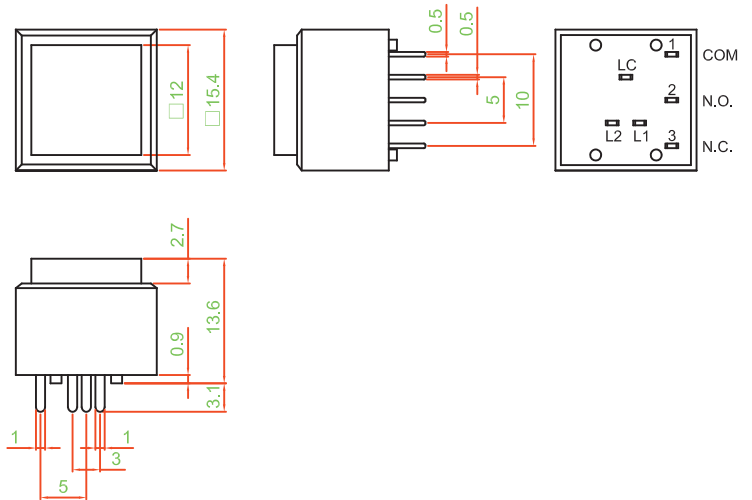
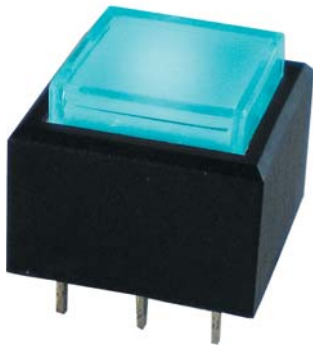


L SERIES

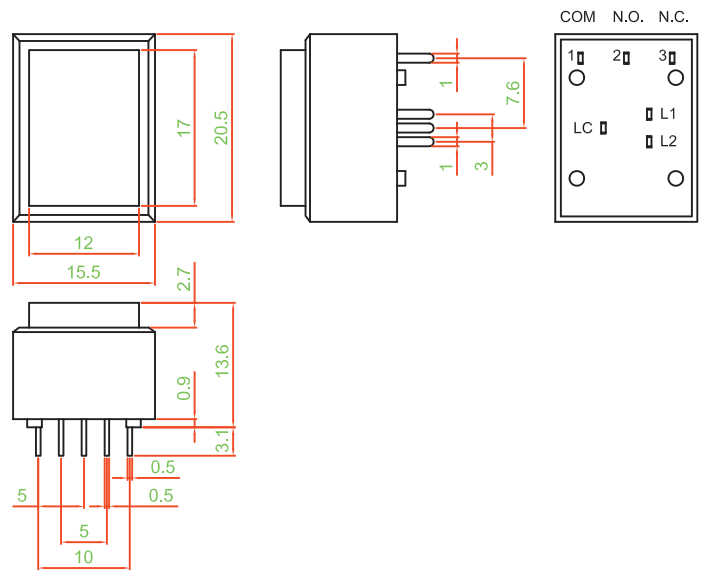
LED PUSH BUTTON SWITCH

► DIMENSION & FRAME TYPE

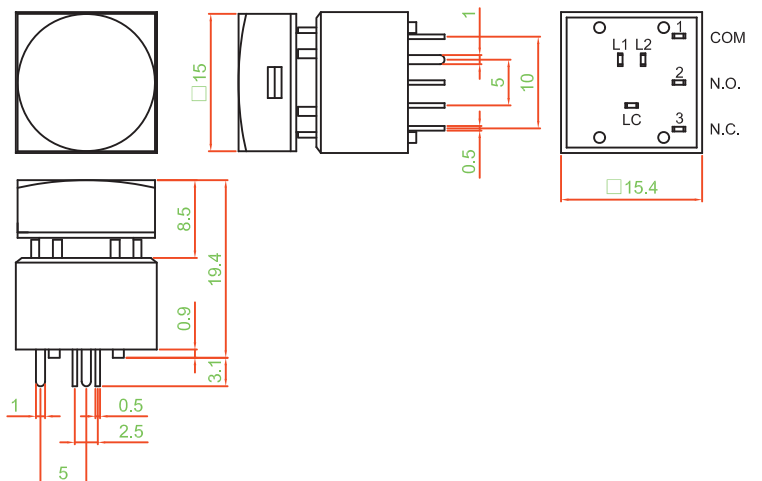
L - S1PN □□□□ Q



L - B1PN □□□□ Q

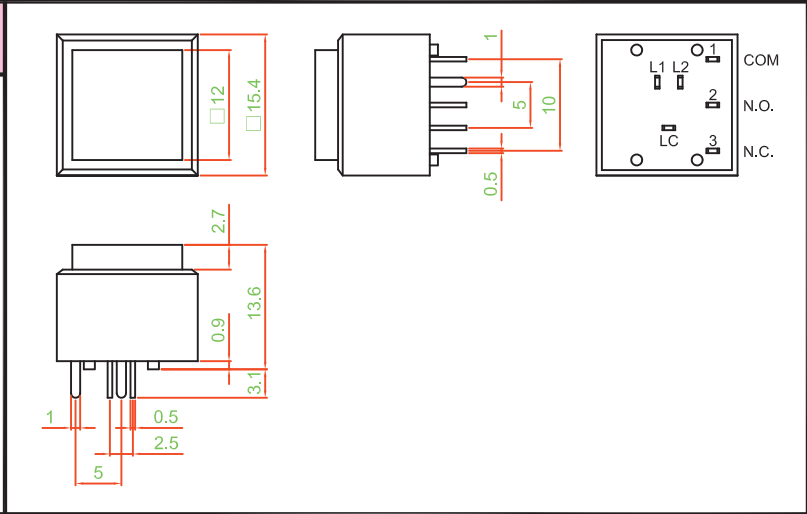


L - MH1PN □□□□ Q

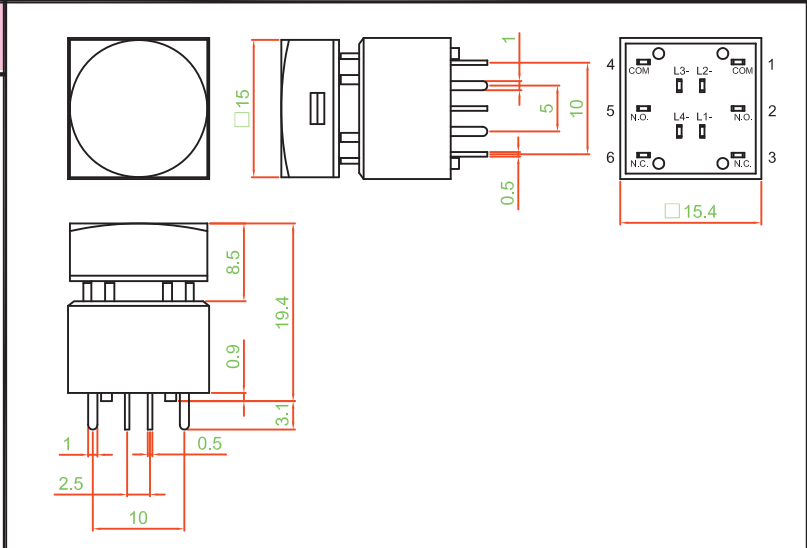


▶ DIMENSION & FRAME TYPE

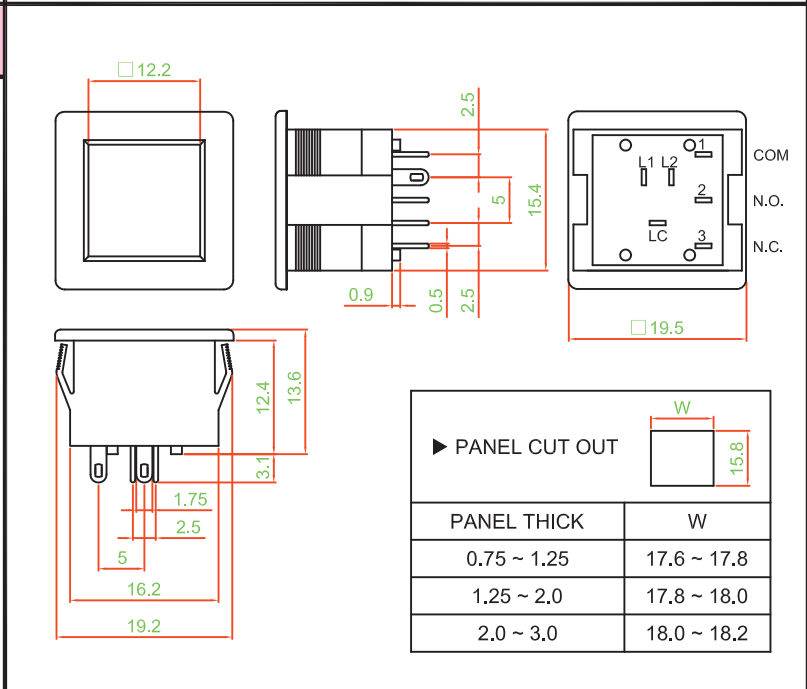
L - ML1PN □□□□ Q



L - MH2PN-RGB-Q



L - E1WN □□□□ Q

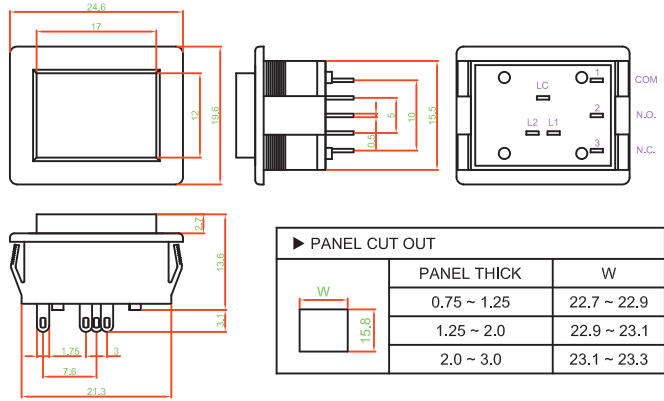


L SERIES

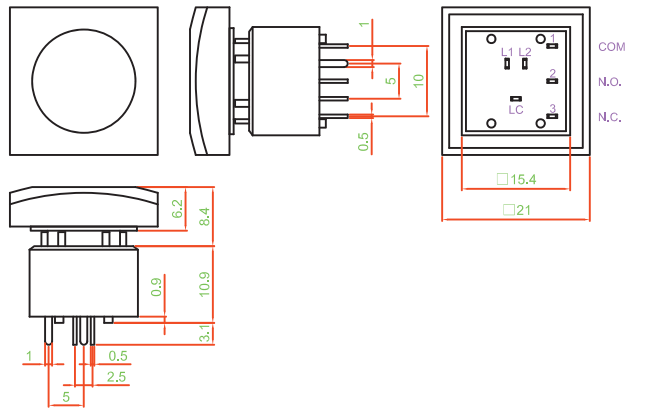
LED PUSH BUTTON SWITCH

► DIMENSION & FRAME TYPE

L - F1WN□□□□Q



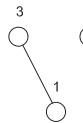
L - MHB1PN□□□□Q



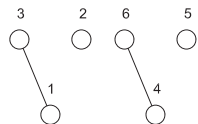
► SCHEMATIC

SWITCH

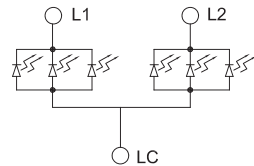
1P2T



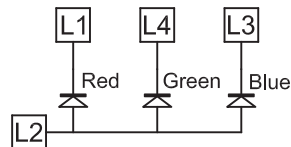
2P2T



LED

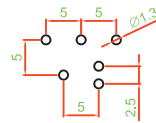


RGB

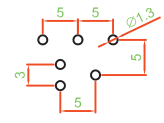


► P.C.B LAYOUT

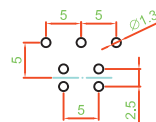
MH.ML.MHB TYPE



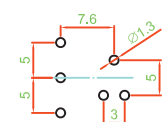
S TYPE



RGB TYPE



B TYPE



► MATERIAL

- COVER : PC
- BASE FRAME : PA + GF
- ACTUATOR : POM
- TERMINAL : Q : BRASS SILVER PLATING
R : BRASS GOLD PLATING

